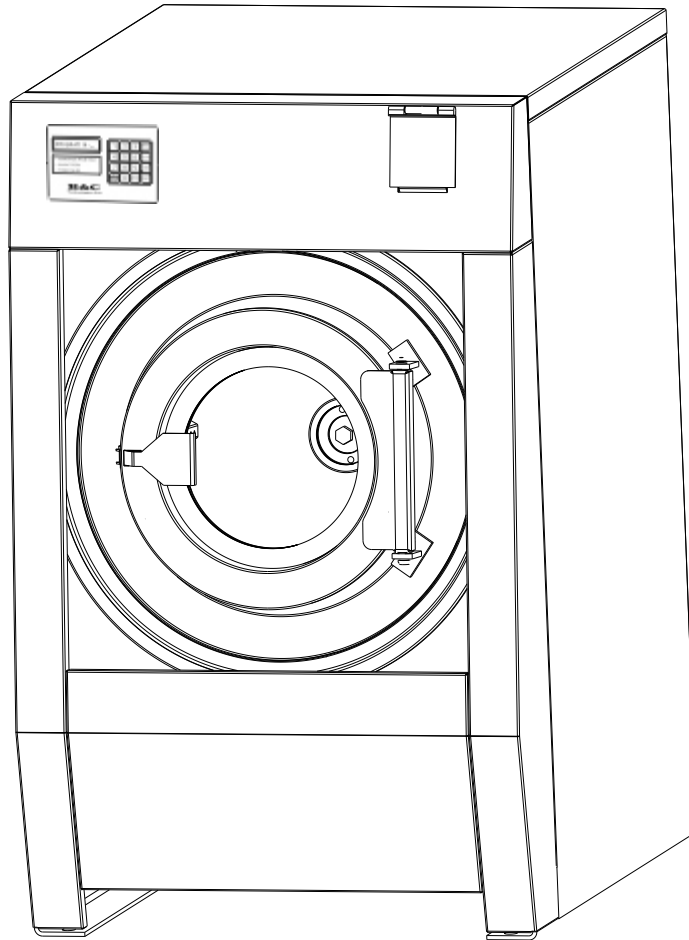


# Washer-Extractor

## SP Series Spare Parts Manual



**B&C Technologies**

Panama City, FL  
(850) 249-2222  
(850) 249-2226 FAX  
[www.bandctech.com](http://www.bandctech.com)

Revision 3.95  
27-May-2014



Table of Contents	Ordering Information	4
	Name Plate Location	4
	Model Identification	5
	Decals and Locations	6
	Door Assembly	8
	Door Hinge	10
	Door Lock	12
	Door Handle	14
	Rear Panel Assembly	16
	Power Panel Assembly	18
	Cabinet Assembly	20
	Single Supply Dispenser	22
	5 Cup Supply Dispenser	24
	Front Control Module	26
	Control Panel	28
	Front Main Assembly	30
	Rear Main Assembly	32
	Steam Injection Assembly	34
	Bearing Housing	36

## B&C Technologies

Panama City, FL  
(850) 249-2222  
(850) 249-2226 FAX  
[www.bandctech.com](http://www.bandctech.com)

# Washer-Extractor

## Parts Ordering Information

If you require literature or spare parts, please contact your local distributor.

If a local distributor is unavailable, you may contact B&C Technologies directly at (850) 249-2222 for the name of your nearest parts dealer.

For technical assistance:

(850) 249-2222 Phone

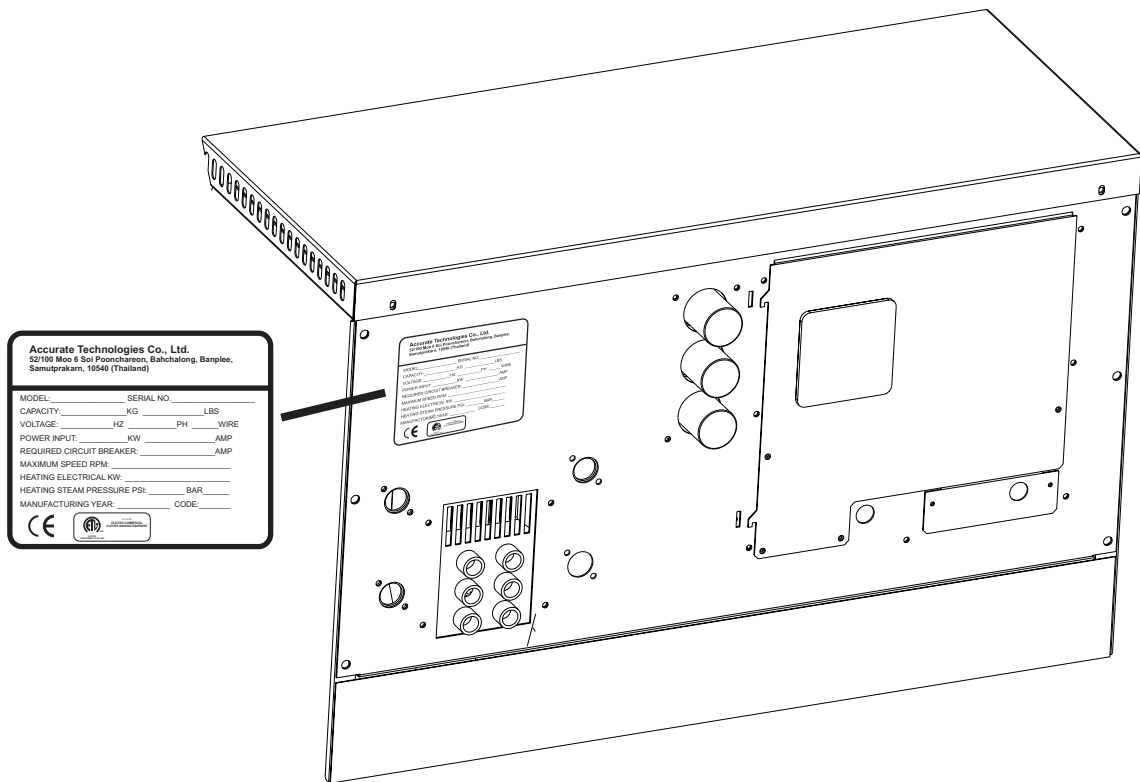
(850) 249-2226 FAX

parts@bandtech.com

www.bandtech.com

## Nameplate Location

When contacting B&C about your equipment, please make note of the model and serial number, located on the nameplate as shown below.



# Washer-Extractor

## Model Identification

Information contained in the manual  
is for the following machine(s).

SP-40

SP-45

SP-60

SP-65

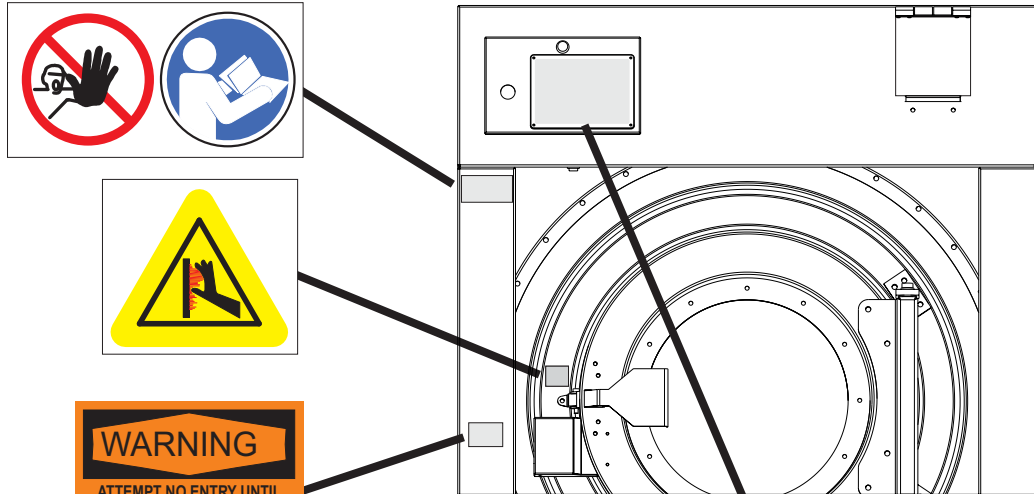
SP-100

SP-110

# Washer-Extractor

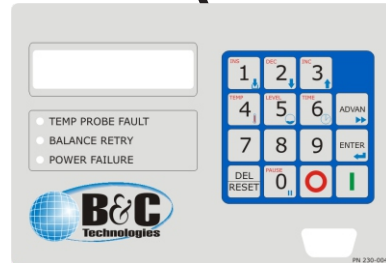
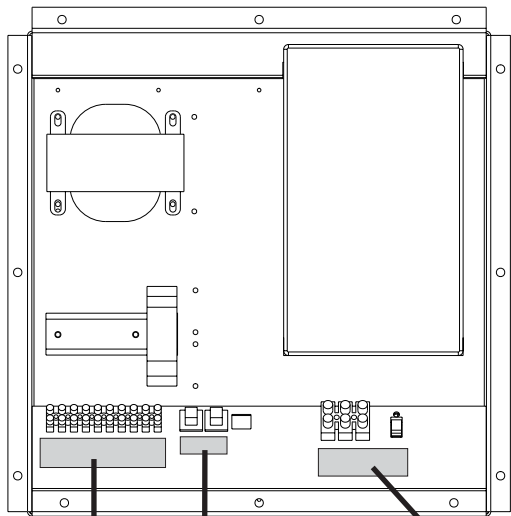
## Decal Information

Note: Unless otherwise indicated, decals are all contained on a single sheet. Part number: 230-002



**WARNING**  
 ATTEMPT NO ENTRY UNTIL  
 ROTATION HAS STOPPED  
 SERIOUS INJURY MAY RESULT

Part Number 230-005



Part Number 230-004

1 2 3 4 5 6 7 8 COM  
**CHEMICAL INJECTION SIGNALS**  
 DRY CONTACT, 24VAC, 1.0A MAX TOTAL LOAD

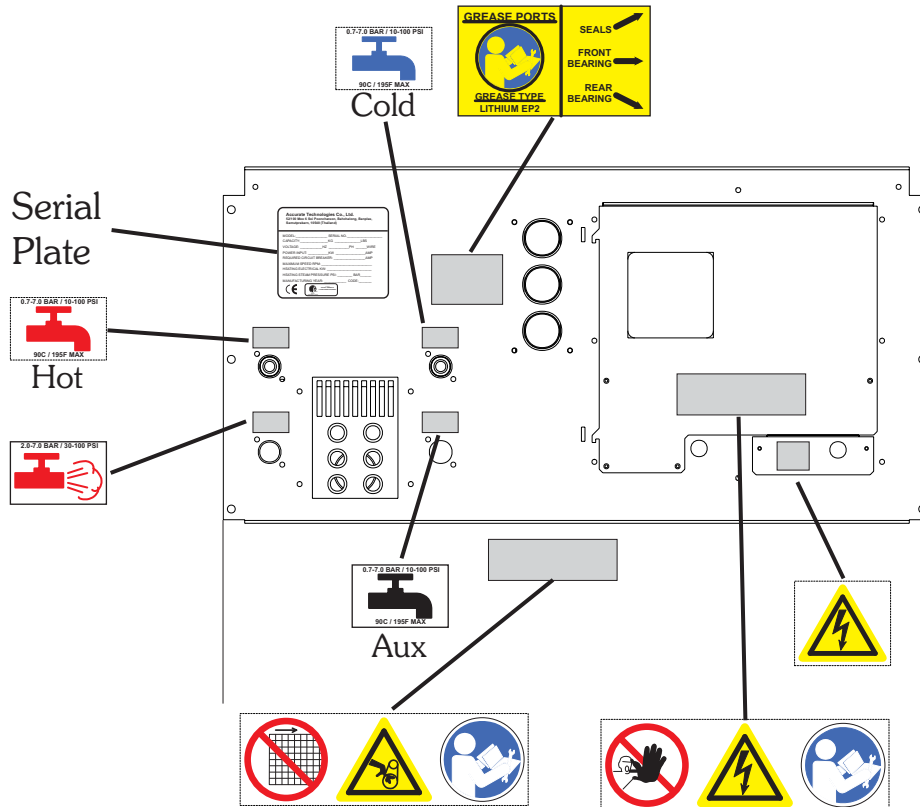
**CHEM** 24V  
 1.0 A 6.0 A

R S T PE  
  
 Cu CONDUCTORS ONLY

# Washer-Extractor

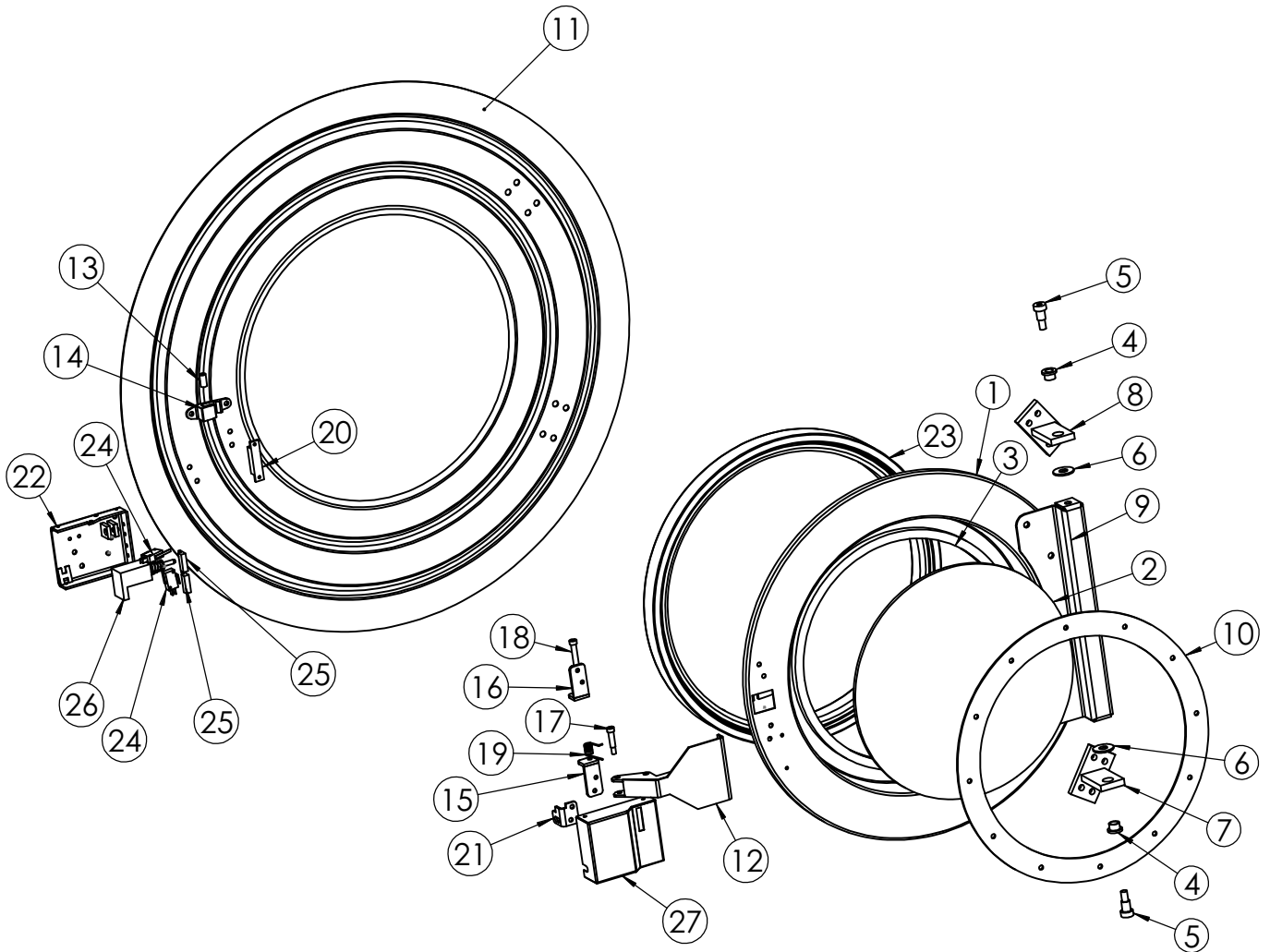
## Decal Information

Note: Unless otherwise indicated, decals are all contained on a single sheet. Part number: 230-002



# Washer-Extractor

## Door Assembly





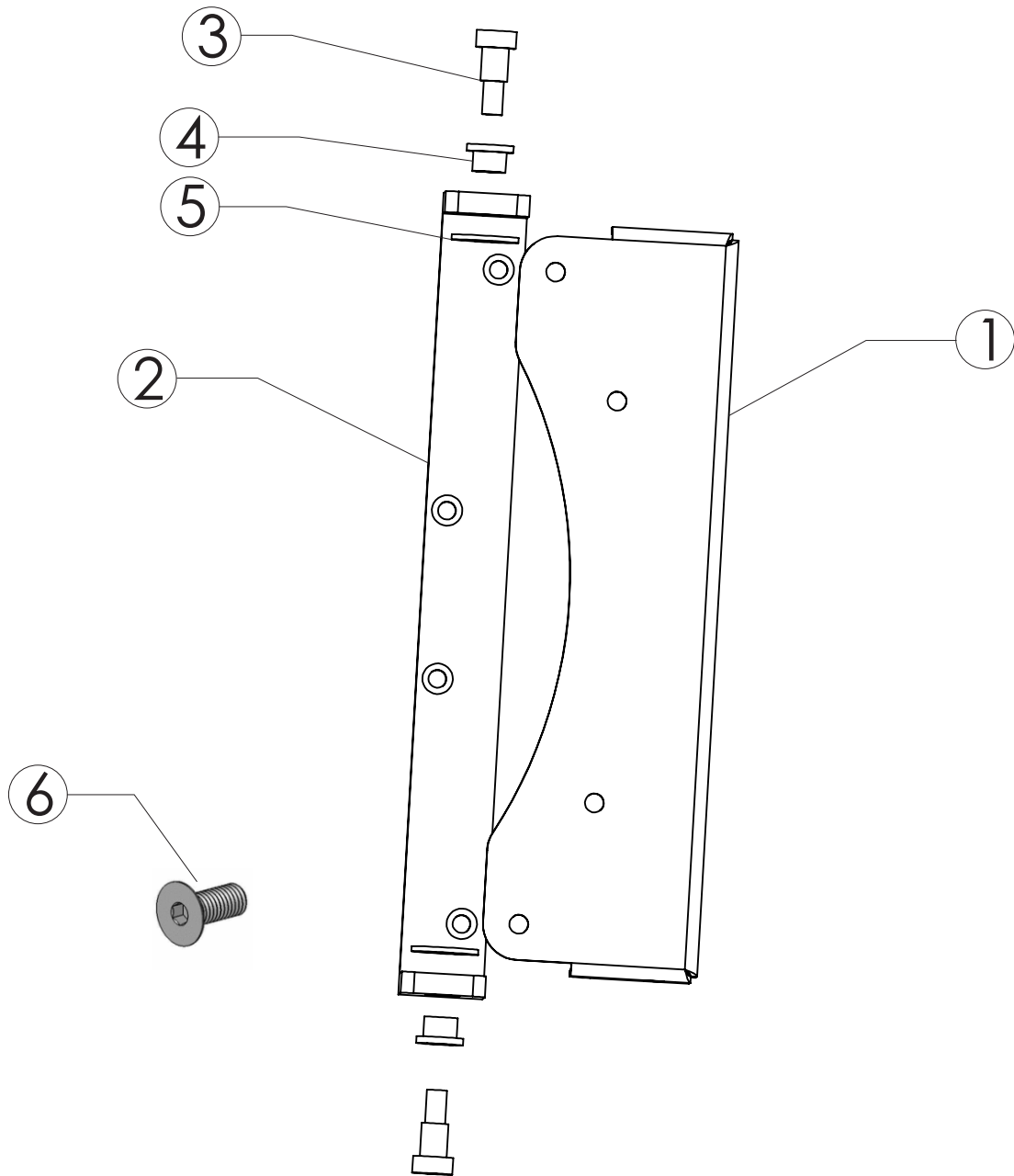
# Washer-Extractor

## Door Assembly

ITEM NO.	QTY	PART NUMBER			DESCRIPTION
		SP-40/45	SP-60/65	SP-100/110	
1	1	600-139	600-002	600-188	Door Ring
2	1	290-001	600-039	600-189	Door Glass
3	1	170-001	600-045	600-191	Door Glass Gasket
4	2	430-001	430-001	430-001	Door Hinge Bushing
5	2	430-002	430-002	430-002	Door Hinge Bolt
6	2	430-003	430-003	430-003	Door Hinge Washer
7	1	600-040	600-040	600-040	Hinge Bracket, Bottom
8	1	600-041	600-041	600-041	Hinge Bracket, Top
9	1	600-140	600-042	600-190	Door Hinge
10	1	600-141	600-046	600-192	Door Glass Retainer
11	1	600-129	600-003	600-179	Shell Front
12	1	600-109	600-109	600-109	Door Handle Assembly
13	1	430-006	430-006	430-006	Door Lock Bushing
14	1	600-097	600-097	600-097	Door Lock Block
15	1	600-102	600-102	600-102	Door Handle Bracket Bottom
16	1	600-101	600-101	600-101	Door Handle Bracket Top
17	1	430-007	430-007	430-007	Door Lock Bolt
18	1	430-008	430-008	430-008	Door Handle Bolt
19	1	600-153	600-153	600-153	Door Handle Spring
20	1	340-703	340-703	340-703	Magnet
21	1	600-103	600-103	600-103	Door Lock Bar
22	1	600-108	600-108	600-108	Door Lock Plate Assembly
23	1	600-340	600-194	600-193	Door Gasket
24	2	340-001	340-001	340-001	Door Lock Switch
25	2	HAM-702	HAM-702	HAM-702	Magnetic Reed Switch
26	2	300-001	300-001	300-001	Door Lock Solenoid
27	2	600-107	600-107	600-107	Door Lock Cover

# Washer-Extractor

New Style Hinge



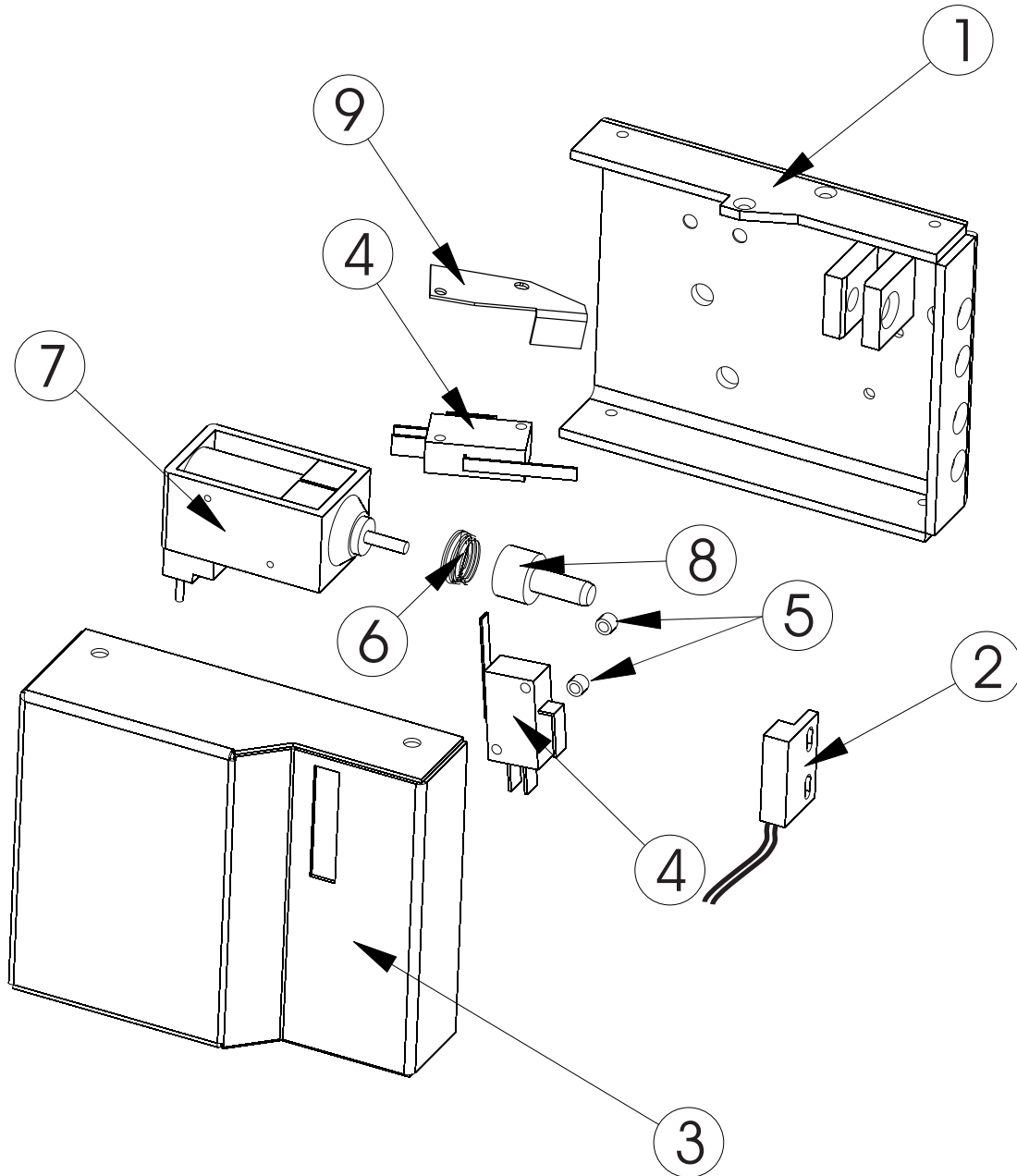
# Washer-Extractor

## New Style Hinge

ITEM NO.	QTY	PART NUMBER			DESCRIPTION
		SP-40/45	SP-60/65	SP-100/110	
1	1	600-478	600-473	600-481	DOOR HINGE
2	1	600-474	600-474	600-474	DOOR HINGE BRACKET
3	2	430-002	430-002	430-002	DOOR HINGE BOLT
4	2	430-001	430-001	430-001	DOOR HINGE BUSHING
5	2	430-003	430-003	430-003	DOOR HINGE WASHER
6	4	430-106	430-106	430-106	DOOR HINGE MOUNTING SCREW

# Washer-Extractor

## Magnetic Latching Door Lock



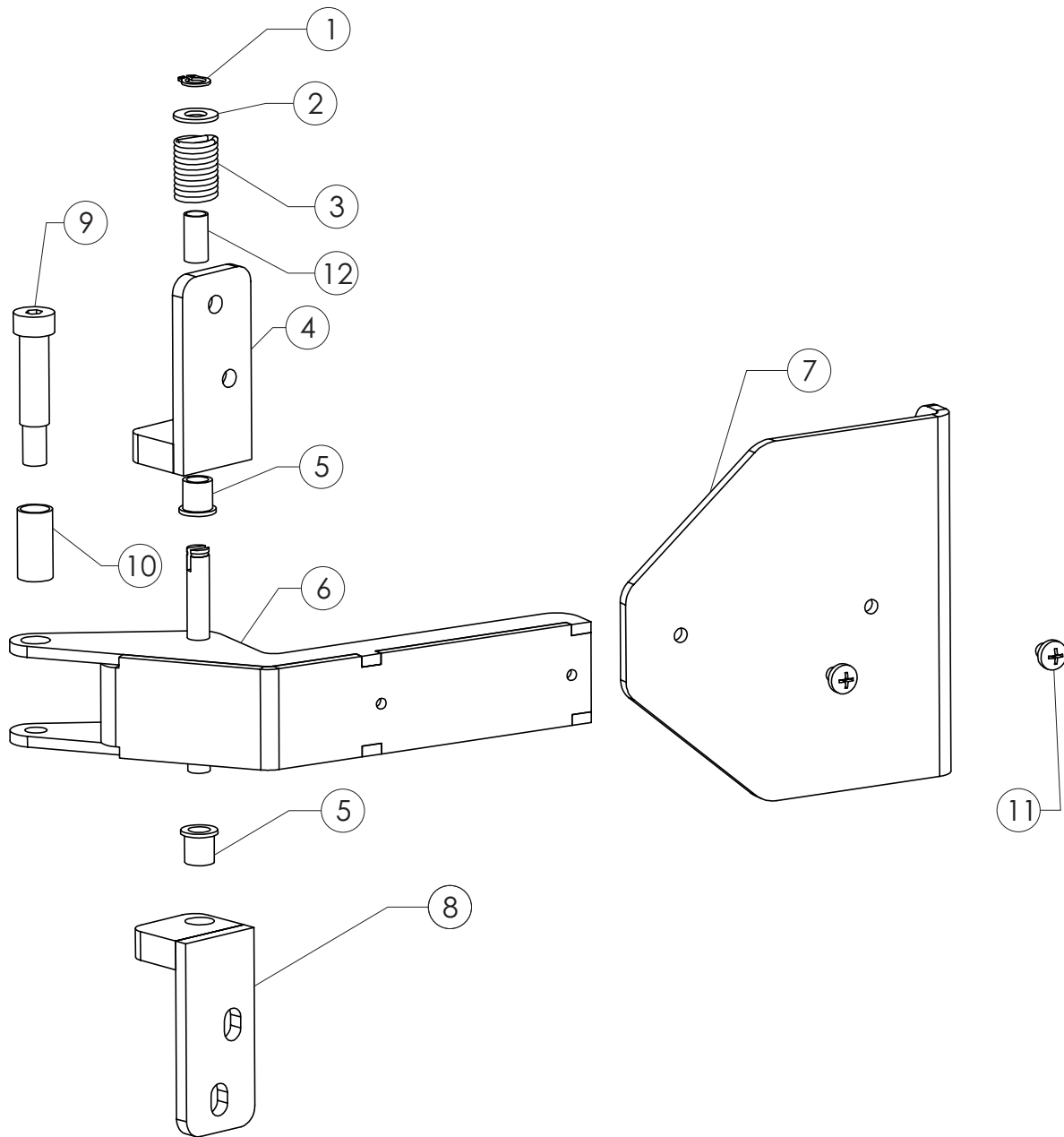
# Washer-Extractor

## Magnetic Latching Door Lock

ITEM NO.	QTY	PART NUMBER	DESCRIPTION
	1	600-108	Door Lock Plate Assembly, Complete
1	1	600-105	Door Lock Plate
2	1	HAM-702	Switch, Magnetic Reed
3	1	600-107	Door Lock Cover
4	2	340-001	Door Lock Switch
5	2	430-005	Standoff, Nylon
6	1	310-001	Spring, Door Solenoid
7	1	300-125	Solenoid, Mag-Latch
8	1	600-150	Door Locking Pin
9	1	600-932	Overtravel Switch Stop
Not Shown	1	370-501	Board, Door Lock, Mag-Latch

# Washer-Extractor

## Door Handle



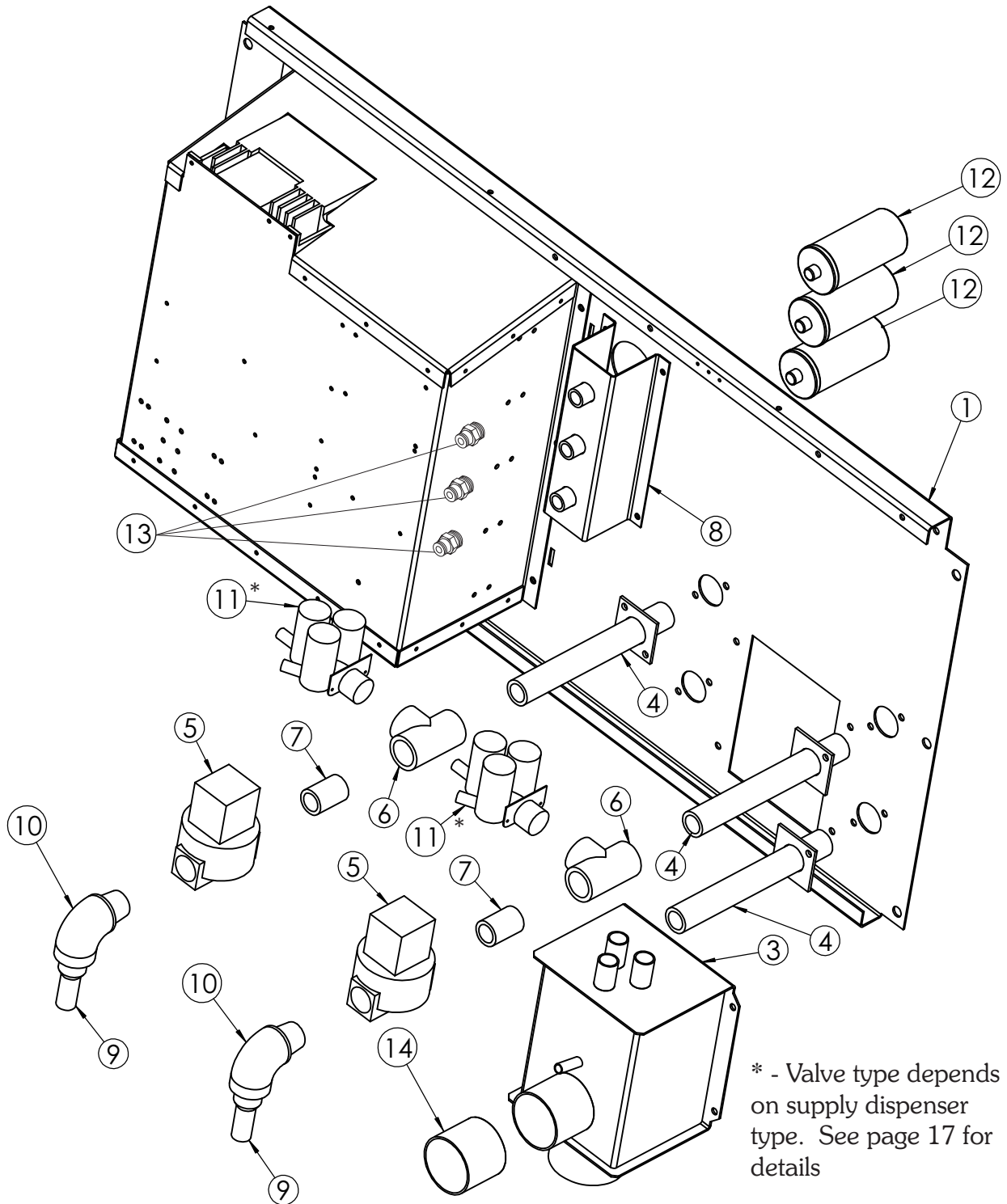
# Washer-Extractor

## Door Handle

ITEM NO.	QTY	PART NUMBER	DESCRIPTION
	1	600-109	Assembly, Door Handle Complete
1	1	600-786	External Retaining Ring
2	1	600-787	Washer
3	1	600-785	Door Handle Spring
4	1	600-101	Top Door Handle Hinge
5	2	600-799	Door Handle Bushing
6	1	600-793	Door Handle Base
7	1	600-794	Door Handle Paddle
8	1	600-102	Bottom Door Handle Hinge
9	1	430-007	Door Lock Bolt
10	1	430-006	Door Lock Bushing
11	2	430-048	Screw, Handle to Base
12	1	601-023	Bushing, Anti-rattle

# Washer-Extractor

## Rear Panel Assembly





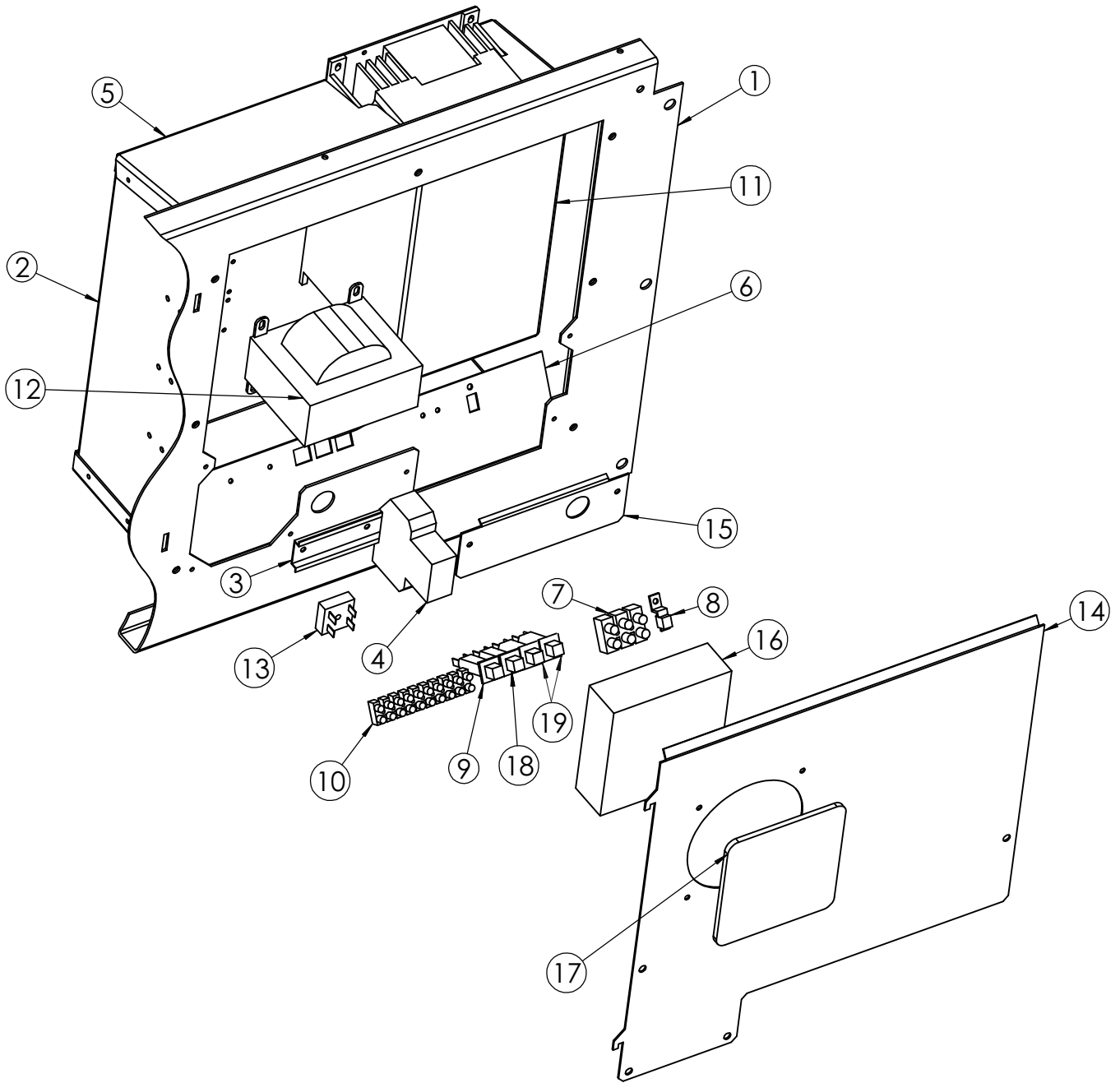
# Washer-Extractor

## Rear Panel Assembly

ITEM NO.	QTY	PART NUMBER			DESCRIPTION
		SP-40/45	SP-60/65	SP-100/110	
1	1	600-142	600-077	600-208	Rear Panel
2	1	370-060	370-061	370-017	EMI Filter
3	1	600-063	600-063	600-211	Vacuum Breaker
4	3	600-079	600-079	600-210	Inlet Pipe Weldment
5	2	380-071	381-707	PAR-003	Valve, Water
6	2	420-004	420-004	420-006	Tee
7	2	420-010	420-010	420-005	Close Nipple
8	1	600-082	600-082	600-085	Grease Connection Box
9	2	420-011	420-011	420-008	Hose Nipple
10	2	420-012	420-012	420-007	Elbow, Street
11	1 or 2	381-296	381-296	381-296	3-way valve
	1	381-295	381-295	381-295	2-way valve
	1	381-294	381-294	381-294	1-way valve
12	3	SKF-204	SKF-204	SKF-204	Auto Lubricator (optional)
13	3	420-026	420-026	420-026	Lubrication Line Fitting
14	1	150-400	150-400	150-400	Chemical Hose
Not Shown	7/8/10	200-191	200-191	200-191	Lubrication Line
Not Shown	2	AKM-939	PAR-991	PAR-005	Kit, Repair, Water Valve

# Washer-Extractor

## Power Panel Assembly



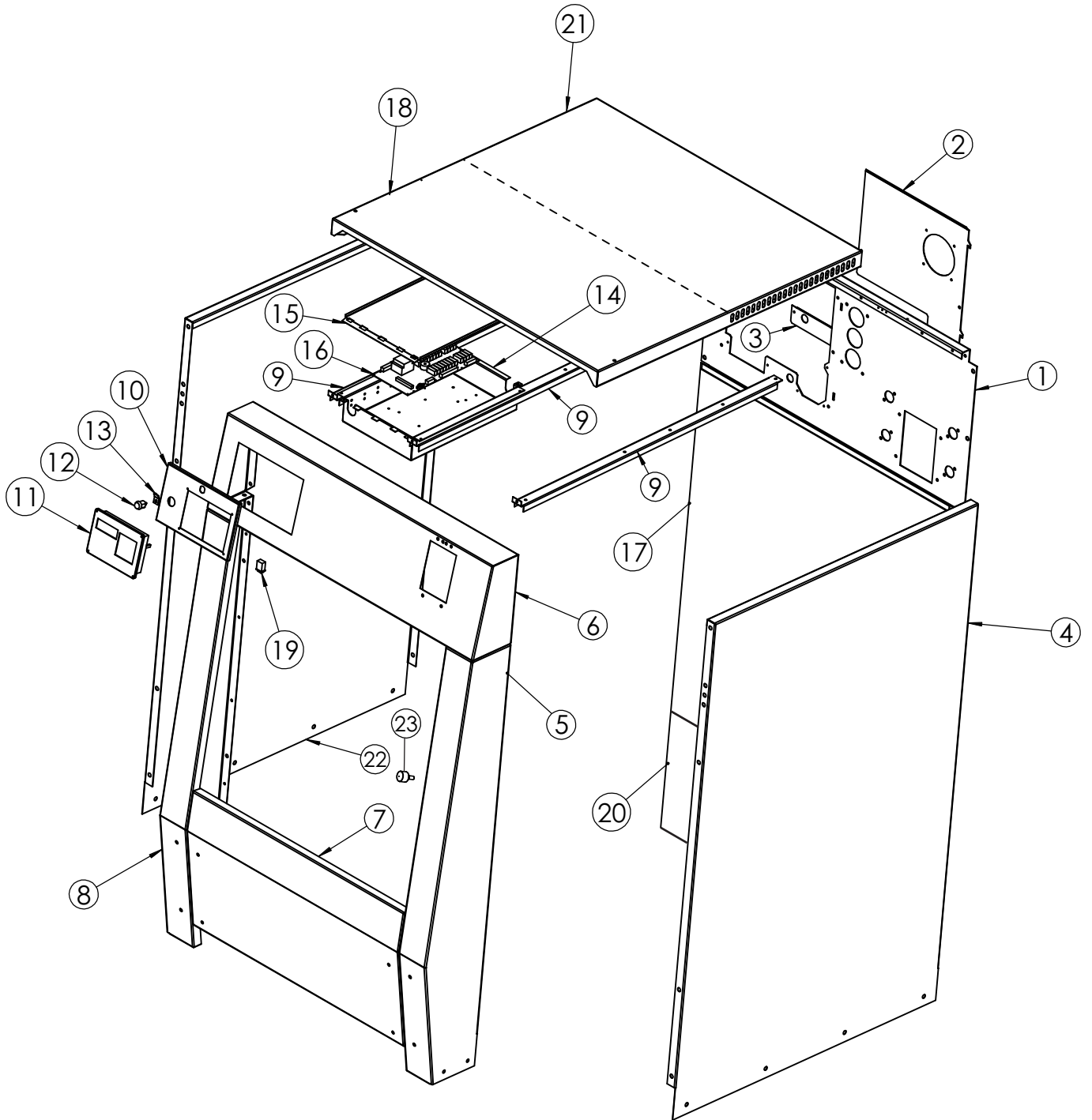
# Washer-Extractor

## Power Panel Assembly

ITEM NO.	QTY	PART NUMBER			DESCRIPTION
		SP-40/45	SP-60/65	SP-100/110	
1	1	600-142	600-077	600-199	Rear Panel
2	1	600-068	600-068	600-068	Rear Electrical Enclosure Body
3	1	432-500	432-500	432-500	DIN-rail, 110 mm
4	1	340-016	340-016	340-016	BREAKER,2A,2POLE (400V Only)
5	1	600-070	600-070	600-070	Power Panel Top Plate
6	1	600-069	600-069	600-069	Power Panel Bottom Plate
7	1	140-007	140-007	140-007	Terminal Block, Power
8	1	140-734	140-734	140-734	Ground Lug
9	1	350-001	350-001	350-001	Circuit Breaker, 6A
10	1	140-006	140-006	140-006	Terminal Block, 10 Pole
11	1	370-031	370-034	370-039	Inverter, Delta, 200V, 1phase
		370-032	370-035		Inverter, Delta, 200V, 3phase
		371-031	371-034	371-039	Inverter, Fuji, 200V, 1phase
		370-032	371-035		Inverter, Fuji, 200V, 3phase
		370-033	370-036	370-040	Inverter, Delta, 400V, 3phase
		371-033	371-036	371-040	Inverter, Fuji, 400V, 3phase
12	1	360-150	360-150	360-150	Transformer
13	1	370-310	370-310	370-310	Bridge Rectifier
14	1	600-081	600-081	600-081	Power Enclosure Cover
15	1	600-225	600-225	600-225	POWER STRAIN RELIEF PLATE
16	1	110-001	110-001	110-001	Fan
17	1	HAM-900	HAM-900	HAM-900	Fan Guard, Retainer, Filter
18	1	350-218	350-218	350-218	Circuit Breaker, 1A
19	2	350-210	350-210	350-210	Circuit Breaker, 2A (200V Only)

# Washer-Extractor

## Cabinet Assembly



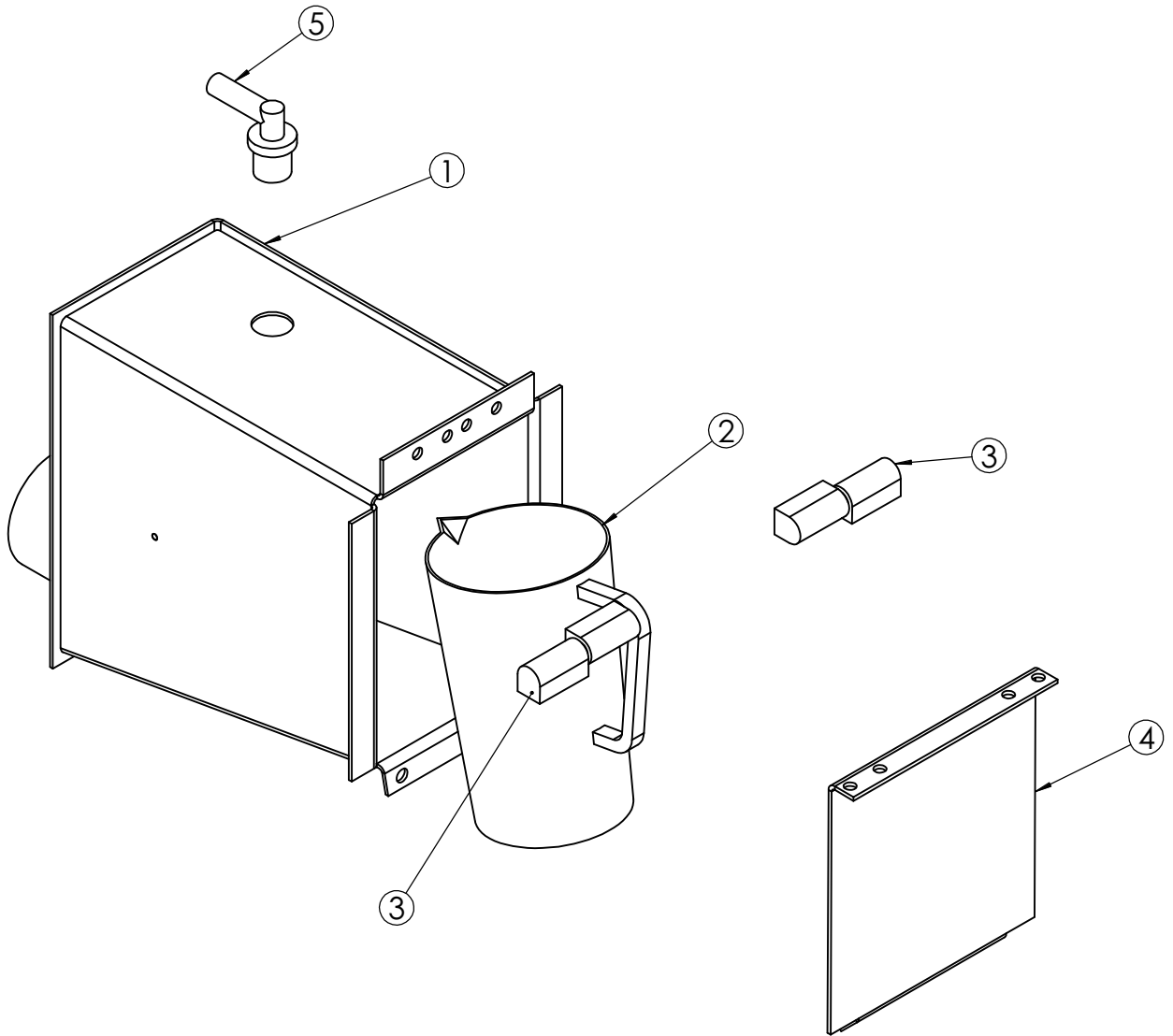
# Washer-Extractor

## Cabinet Assembly

ITEM NO.	QTY	PART NUMBER			DESCRIPTION
		SP-40/45	SP-60/65	SP-100/110	
1	1	600-142	600-077	600-199	Rear Panel
2	1	600-081	600-081	600-081	Power Enclosure Cover
3	1	600-225	600-225	600-225	POWER STRAIN RELIEF PLATE
4	1	600-144	600-073	600-201	Side Panel, Left
5	1	600-145	600-075	600-202	Left Front Column
6	1	600-147	600-086	600-203	Control Panel, 1 cup dispenser
		600-448	600-323	600-234	Control Panel, 5 cup dispenser
7	1	600-149	600-087	600-205	Lower Front Panel
8	1	600-146	600-076	600-206	Right Front Column
9	3	600-226	600-226	600-207	Cabinet Support
10	1	600-223	600-223	600-223	Face Panel, EL6
11	1	370-051	370-051	370-051	Controller, Interface, EL6
12	1	190-850	190-850	190-850	Lock, with 2 keys
13	1	600-347	600-347	600-347	Lock Tang
14	1	600-092	600-092	600-092	Control Enclosure
15	1	600-221	600-221	600-221	CONTROL PANEL COVER
16	1	370-050	370-050	370-050	EL-6 Output Board
17	1	600-462	600-461	600-464	Upper Rear Cover
18	1	600-148	600-227	600-204	Top Panel (Front Top Panel, SP-100)
19	1	340-003	340-003	340-003	Momentary Switch (Non Mag Latch Door Lock Only)
20	1	600-460	600-459	600-463	Lower Rear Cover
21	1			600-891	Rear Top Panel, SP-100
22	1	600-836	600-837	600-838	Side Panel, Right
23	1	170-031	170-031	170-031	Bumper,Door Stop
Not Shown	1	370-501	370-501	370-501	BOARD,DOOR LOCK,MAG LATCH
Not Shown	1	370-052	370-052	370-052	Ribbon Cable, EL6

# Washer-Extractor

Single Supply Dispenser



# Washer-Extractor

## Single Supply Dispenser

### Stainless Steel Supply Dispenser

ITEM NO.	QTY	PART NUMBER	DESCRIPTION
1	1	600-071	Supply Dispenser Body
2	1	150-001	Cup, Supply Dispenser, 500ml
3	1	432-007	Hinge, Liftoff
4	2	600-059	Supply Dispenser Cover
5	1	422-999	Flush Nozzle

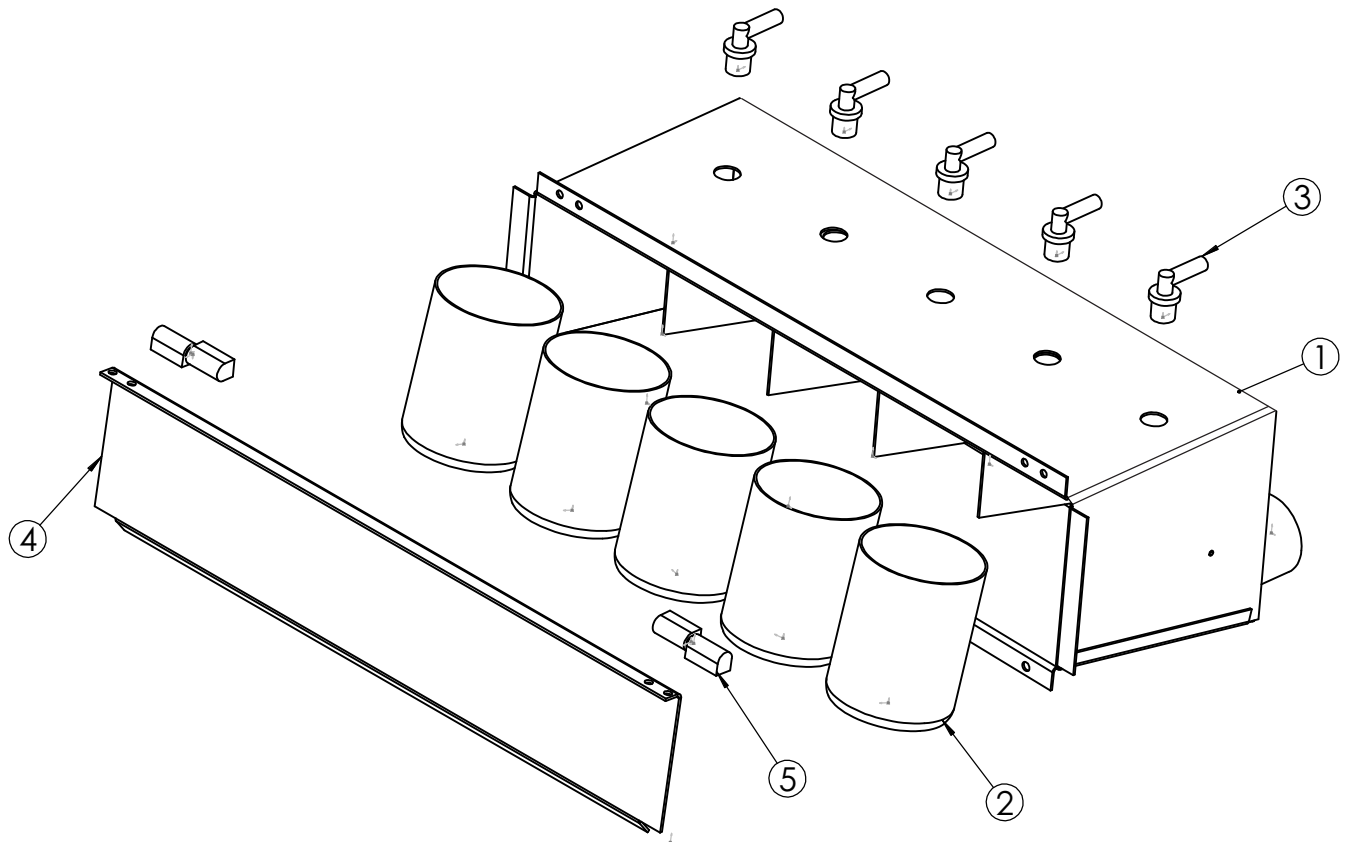
### Plastic Supply Dispenser

ITEM NO.	QTY	PART NUMBER	DESCRIPTION
1	1	150-023	DISPENSER, 1 CUP POLY
2	1	150-021	Cup, Supply Dispenser, 500ml
4	2	150-026	LID, DISPENSER, 1 CUP
5	1	422-999	Flush Nozzle
Not Shown	4	150-022	BUSHING, DISPENSER MOUNTING, POLY

Note: The plastic supply dispenser mounts in place of the stainless steel dispenser. 2 holes will need to be drilled.

# Washer-Extractor

5 Cup Supply Dispenser





# Washer-Extractor

## 5 Cup Supply Dispenser

### Stainless Steel Supply Dispenser

ITEM NO.	QTY	PART NUMBER	DESCRIPTION
1	1	600-310	Supply Dispenser Body
2	1	150-001	Cup, Supply Dispenser, 500ml
3	5	422-999	Flush Nozzle
4	2	600-313	Supply Dispenser Cover
5	1	432-007	Hinge, Liftoff

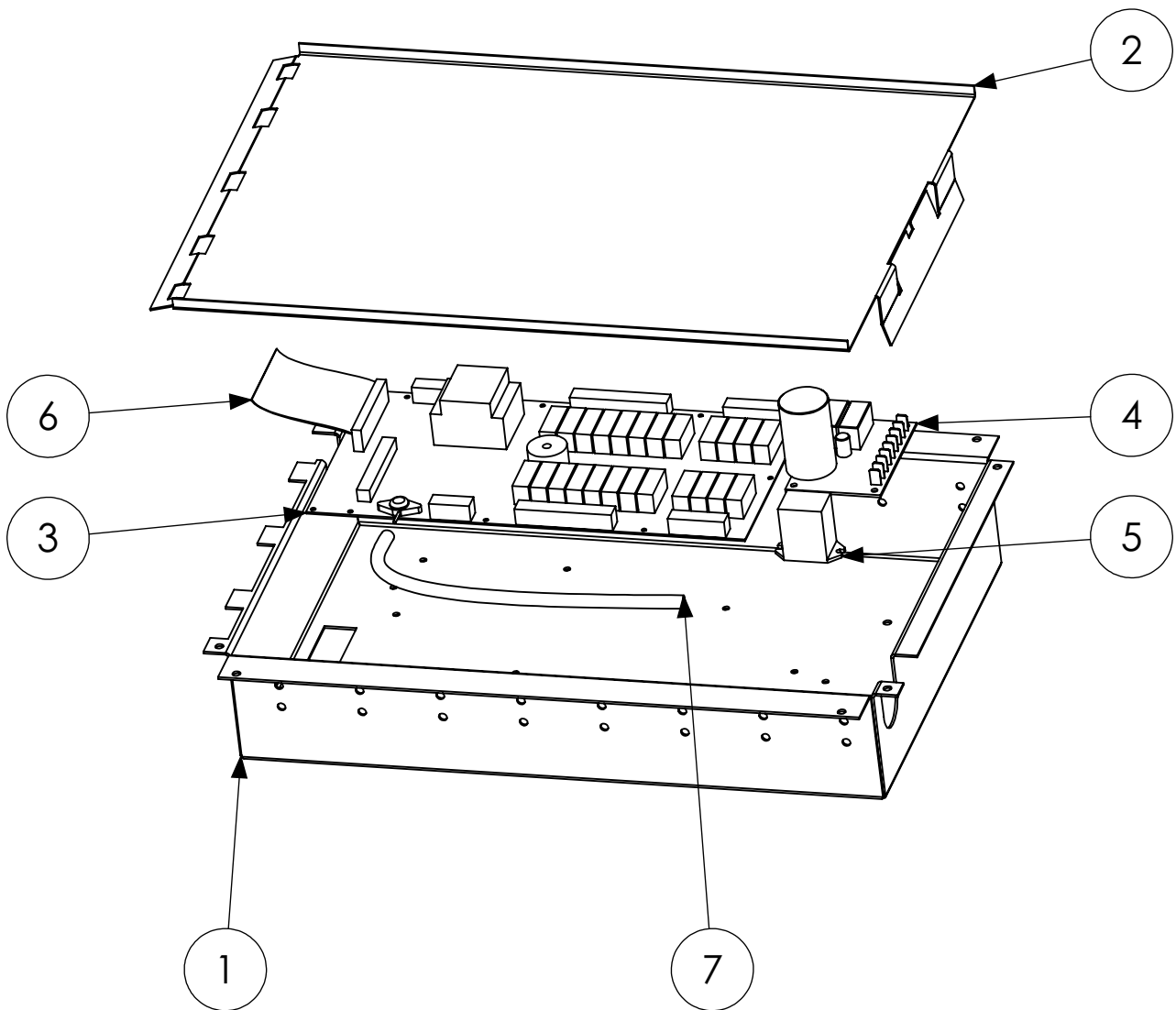
### Plastic Supply Dispenser

ITEM NO.	QTY	PART NUMBER	DESCRIPTION
1	1	150-025	DISPENSER, 5 CUP POLY
2	1	150-021	Cup, Supply Dispenser, 500ml
3	5	422-999	Flush Nozzle
4	2	150-028	LID, DISPENSER, 5 CUP
Not Shown	4	150-022	BUSHING, DISPENSER MOUNTING, POLY

Note: The plastic supply dispenser mounts in place of the stainless steel dispenser. 2 holes will need to be drilled.

# Washer-Extractor

## Front Control Module



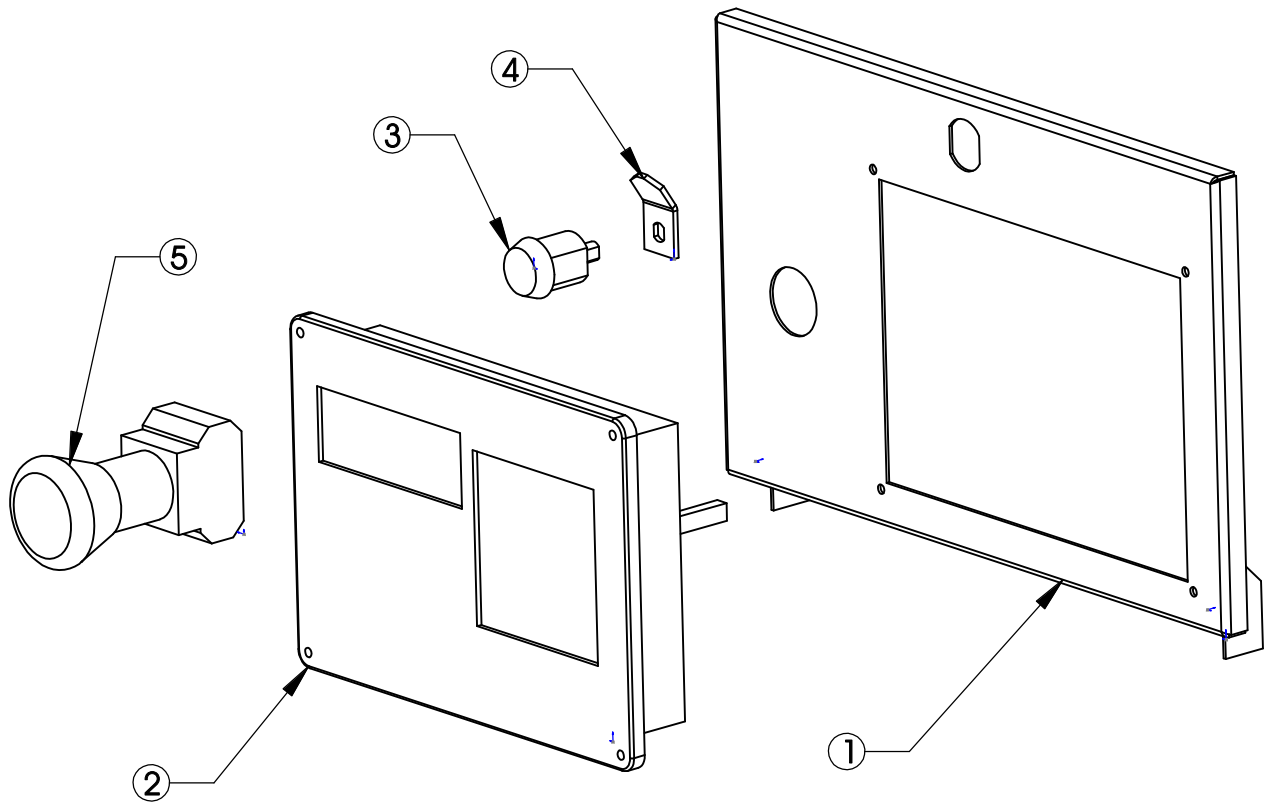
# Washer-Extractor

## Front Control Module

ITEM NO.	QTY	PART NUMBER			DESCRIPTION
		SP-40/45	SP-60/65	SP-100/110	
1	1	600-092	600-092	600-092	CONTROL ENCLOSURE
2	1	600-221	600-221	600-221	CONTROL PANEL COVER
3	1	370-050	370-050	370-050	EL6 OUTPUT BOARD
4	1	370-501	370-501	370-501	BOARD, DOOR LOCK
5	1	330-250	330-250	330-250	RELAY, ICE CUBE
6	1	370-052	370-052	370-052	EL6 RIBBON CABLE
7	1	200-142	200-142	200-142	TRAP, AIR HOSE

# Washer-Extractor

## Control Panel



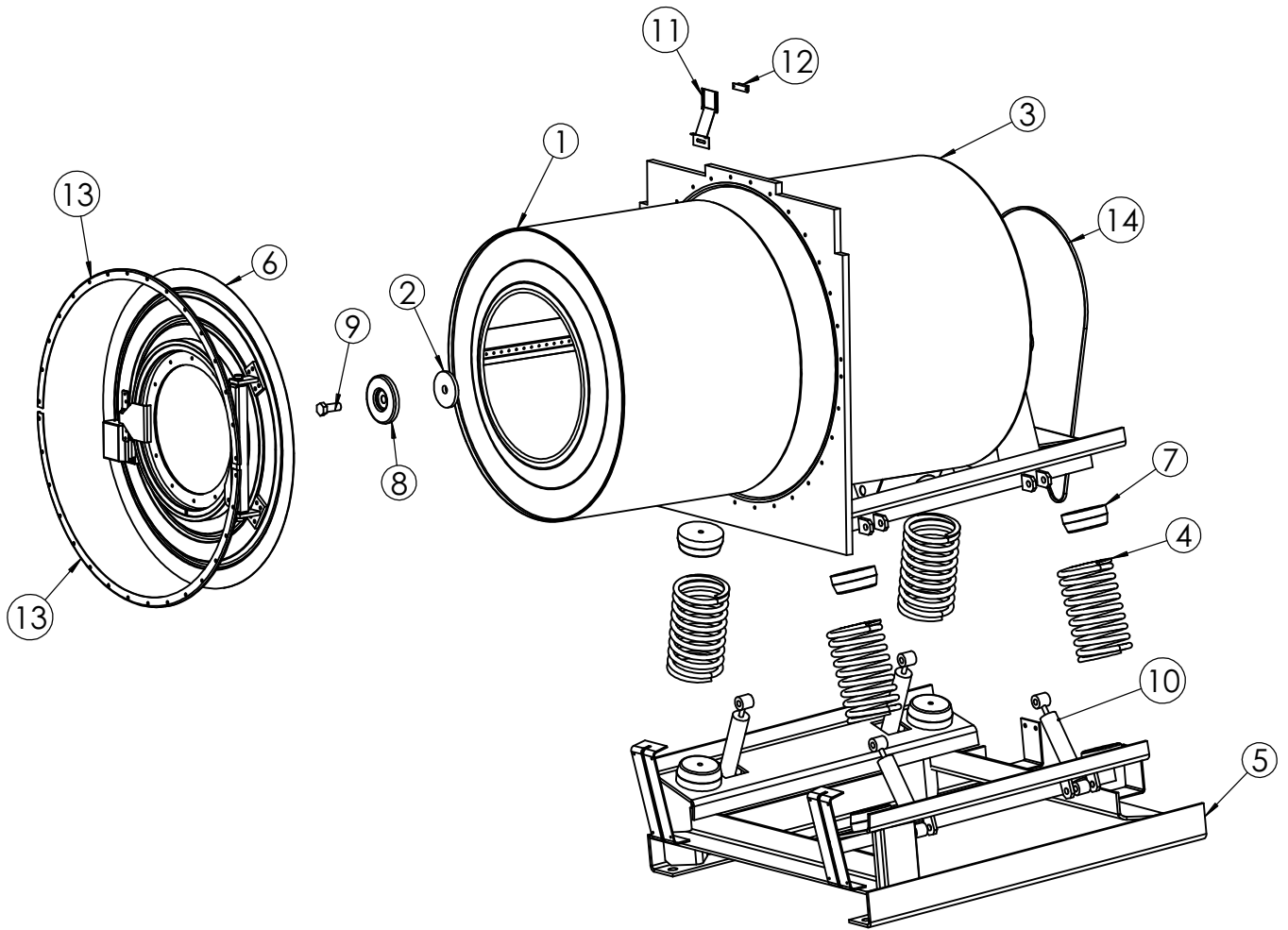
# Washer-Extractor

## Control Panel

ITEM NO.	QTY	PART NUMBER	DESCRIPTION
1	1	600-223	Face Panel, EL6
2	1	370-051	Controller Interface, EL6
3	1	190-850	Lock, 2 keys
4	1	600-347	Lock Tang
5	1	340-701	Emergency Stop Button Assembly

# Washer-Extractor

## Front Main Assembly



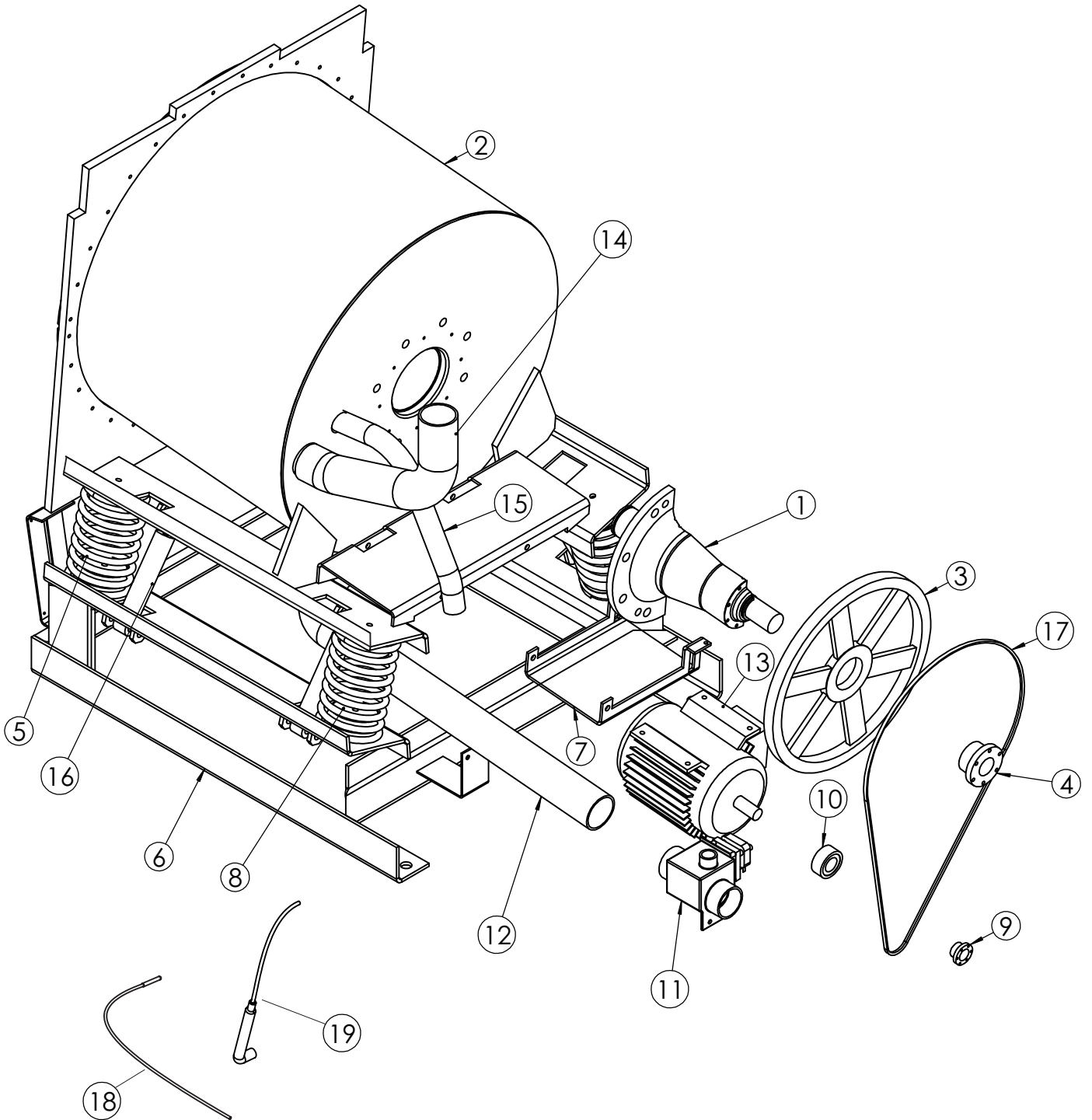
# Washer-Extractor

## Front Main Assembly

ITEM NO.	QTY	PART NUMBER			DESCRIPTION
		SP-40/45	SP-60/65	SP-100/110	
1	1	600-112	600-021	600-161	Cylinder Assembly
2	1	600-022	600-022	600-022	Cylinder Washer
3	1	600-126	600-039	600-172	Shell Assembly
4	4	600-154	600-006	600-196	Spring
5	1	600-119	600-008	600-170	Frame Weldment
6	1	600-129	600-003	600-186	Shell Front
7	8	600-090	600-090	600-090	Spring Guide
8	1	600-020	600-020	600-091	Cylinder Washer Cover
9	1	430-021	430-021	430-021	Bolt
10	4	250-503	250-503	ARW-501	Shock Absorber
11	1	600-220	600-220	600-220	Motion Limit Magnet Bracket
12	1	340-703	340-703	340-703	Magnet
13	2	600-131	600-051	600-180	Shell Band
14	2	280-343	280-010	280-360	Belt, Cylinder

# Washer-Extractor

## Rear Main Assembly





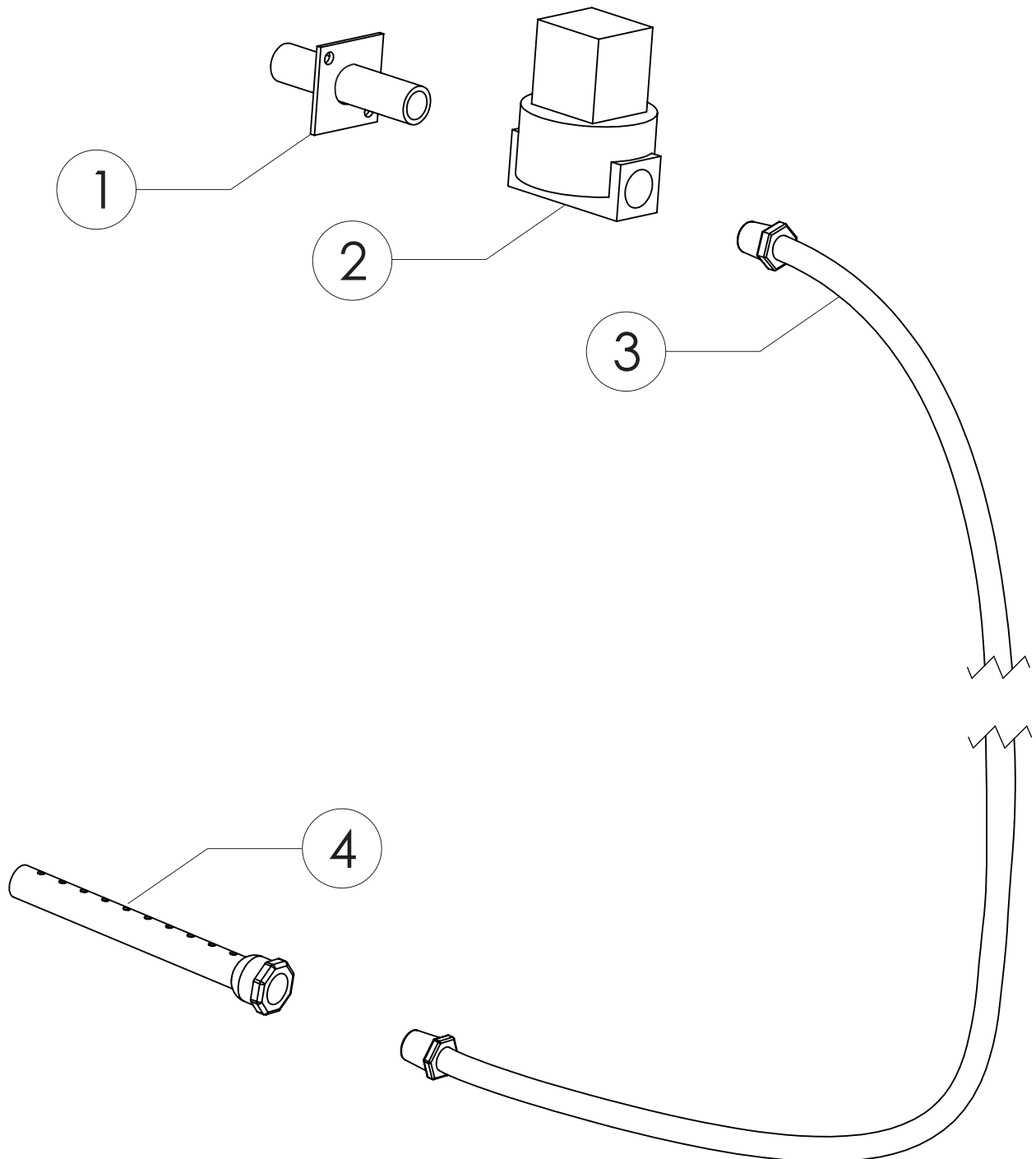
# Washer-Extractor

## Rear Main Assembly

ITEM NO.	QTY	PART NUMBER			DESCRIPTION
		SP-40/45	SP-60/65	SP-100/110	
1	1	600-027	600-027	600-163	Bearing Housing Assembly
2	1	600-119	600-037	600-172	Shell Assembly
3	1	280-008	280-008	280-105	Pulley, Cylinder
4	1	280-009	280-009	280-106	Bushing, Cylinder
5	4	600-154	600-006	600-196	Spring
6	1	600-119	600-008	600-170	Frame Weldment
7	1	600-133	600-088	600-195	Motor Base Plate
8	8	600-090	600-090	600-090	Spring Guide
9	1	280-006	280-006	280-055	Bushing, Motor
10	1	280-007	280-007	280-031	Pulley, Motor
11	1	DOD-620	380-026	380-026	Drain Valve, 24VAC
12	1	150-011	150-399	150-399	Drain Hose
13	1	220-004	220-002	220-007	Motor
14	1	150-002	150-002	150-002	Fill Hose
15	1	150-003	150-003	150-003	Overflow Hose
16	4	250-503	250-503	ARW-501	Shock Absorber
17	2	280-343	280-010	280-360	Belt, Cylinder
18	1	370-053	370-053	370-053	EL6 TEMPERATURE PROBE
19	1	200-142	200-142	200-142	TRAP, AIR HOSE

# Washer-Extractor

Steam Injection Assembly



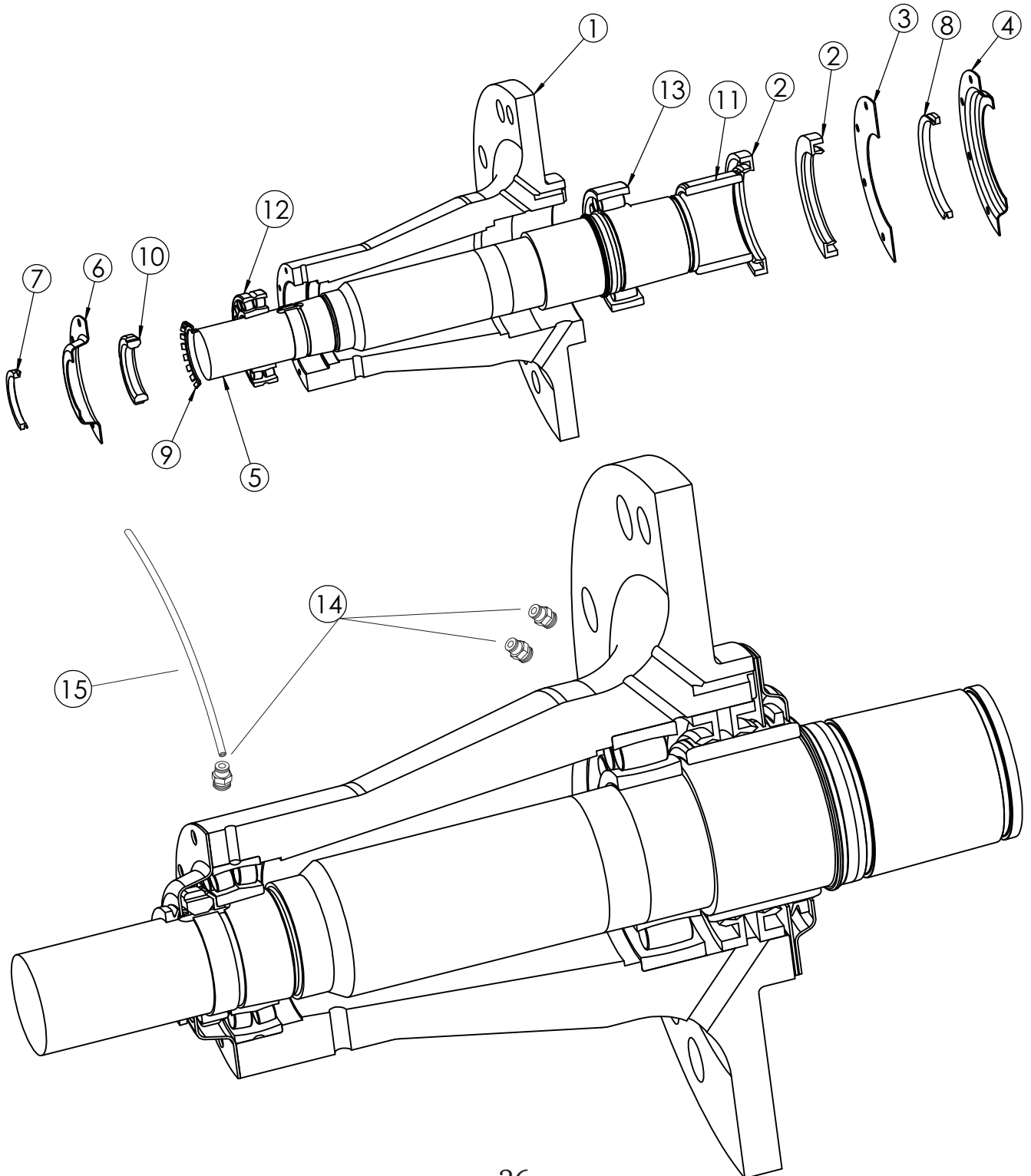
# Washer-Extractor

## Steam Injection Assembly

ITEM NO.	QTY	PART NUMBER			DESCRIPTION
		SP-40/45	SP-60/65	SP-100/110	
1	1	200-811	200-811	200-810	STEAM INLET
2	1	381-708	381-708	381-709	STEAM VALVE
3	1	200-805	200-805	200-804	STEAM HOSE
4	1	200-806	200-806	200-807	STEAM INJECTOR
Not Shown	1	PAR-984	PAR-984	PAR-985	REPAIR KIT FOR STEAM VALVE

# Washer-Extractor

## Bearing Housing



# Washer-Extractor

## Bearing Housing

ITEM NO.	QTY	PART NUMBER			DESCRIPTION
		SP-40/45	SP-60/65	SP-100/110	
		600-027	600-027	600-163	BEARING HOUSING ASSEMBLY, COMPLETE
1	1	600-013	600-013	600-164	BEARING HOUSING
2	2	100-030	100-030	100-138	Seal
3	1	600-025	600-025	600-166	Seal Plate, Flat
4	1	600-024	600-024	600-165	Seal Plate, Front
5	1	600-031	600-031	600-167	Shaft
6	1	600-026	600-026	600-168	Seal Plate, Rear
7	1	100-002	100-002	100-139	Seal, V-Ring
8	1	100-003	100-003	100-250	Seal, V-Ring
9	1	100-035	100-035	100-147	Washer, Bearing
10	1	100-034	100-034	100-148	Nut, Bearing
11	1	600-019	600-019	600-169	Shaft Collar
12	1	100-032	100-032	100-140	Rear Bearing (Outboard)
13	1	100-033	100-033	100-149	Front Bearing (Inboard)
14	3	420-027	420-027	420-027	Fitting, straight, tubing
15	3	200-191	200-191	200-191	Tubing
Not Shown	2	170-207	170-207	170-208	Shaft/Cylinder O-Ring







More information is available on our website:  
[www.bandctech.com](http://www.bandctech.com)

©2008, B&C Technologies, LLC  
All Rights Reserved

---